

---

# Setup Instructions for Tailgater Satellite Antenna & DISH Receiver

---

Setup | Installation | Receiver Activation  
Software Version L551RGND-N

---

## TABLE OF CONTENTS

First-Time Setup	Page 2
Alternate First-Time Setup	Page 6
Subsequent Setup	Page 9

---

# First-Time Setup of Tailgater Satellite Antenna & DISH Receiver

## Setup | Installation | Receiver Activation

Software Version L551RGND-N

### INSTRUCTIONS

ESTIMATED SETUP TIME

#### STEP #1

Position the Tailgater satellite antenna and connect the cabling between the Tailgater and receiver.

**IMPORTANT: The Tailgater and receiver are to be connected BEFORE the receiver is plugged in to the power outlet & turned on. If there is power to the receiver before it is connected to the Tailgater, it will begin the wrong satellite sequence and you will not be setting up your equipment accurately.**

#### STEP #2

Power up TV / ViP®211k Receiver / Tailgater satellite antenna.

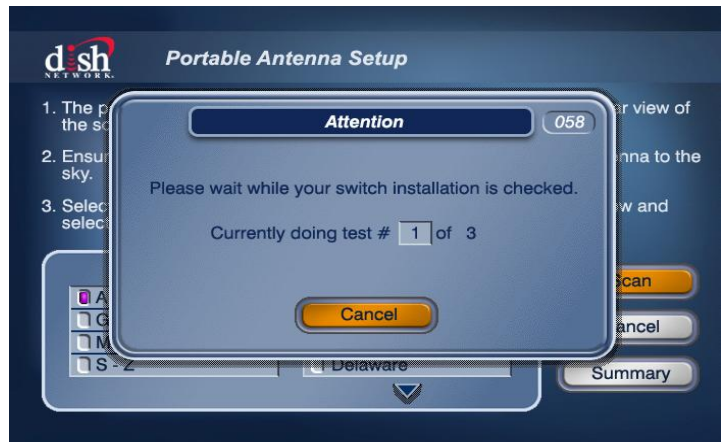
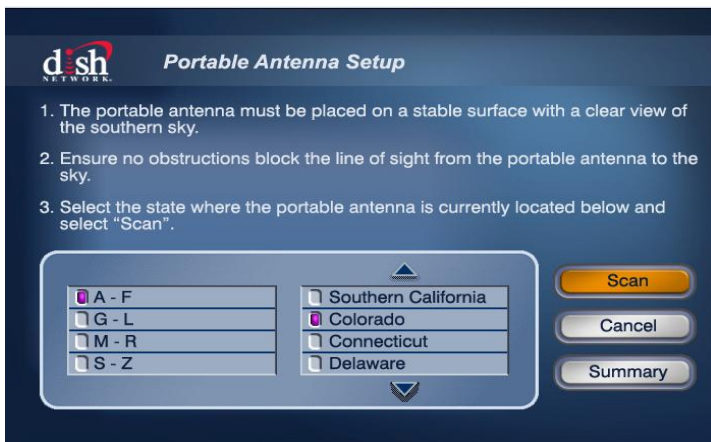
#### STEP #3

Step 1 of 5 Installation Wizard: Program TV Remote to Receiver – Follow the on-screen instructions by pressing 'RECORD' on your DISH remote and then selecting 'Continue'



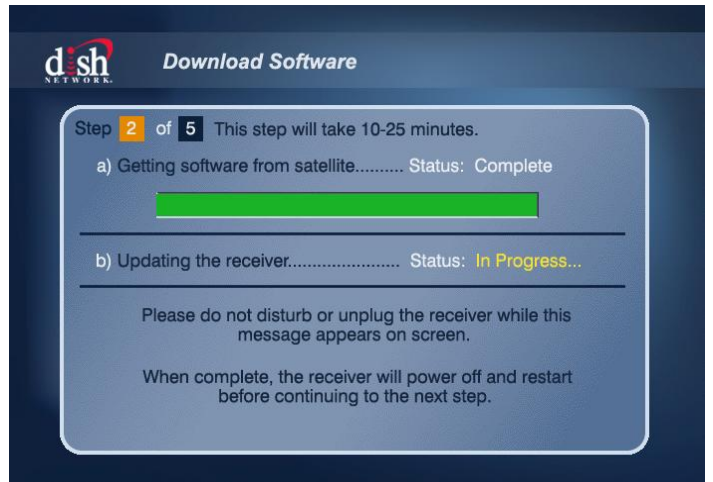
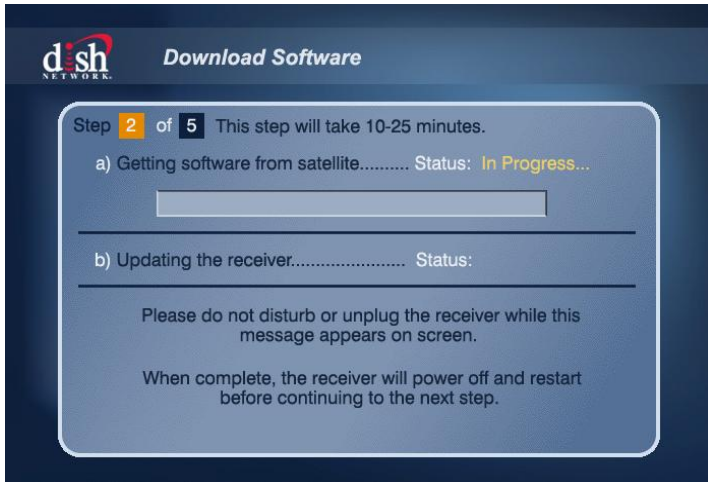
#### STEP #4

Portable Antenna Setup – Select your current location by state and then select 'Scan'

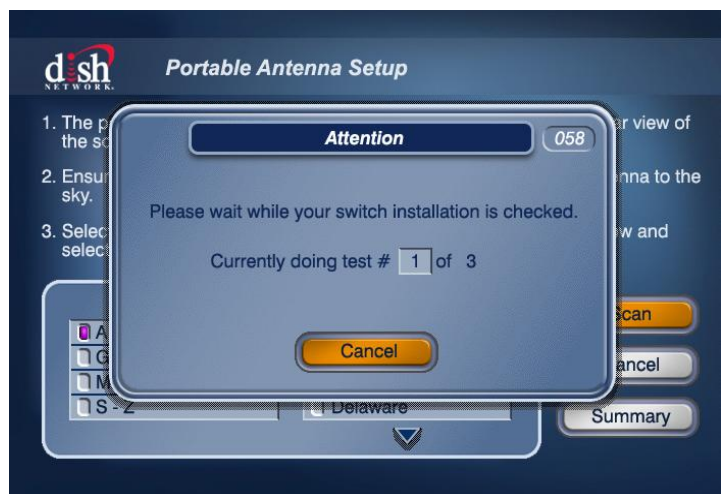
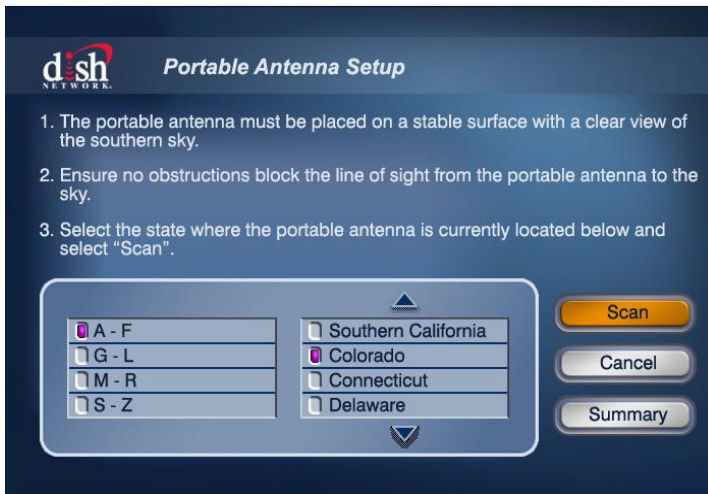


**NOTE: If you do not see the Portable Antenna Setup screen at this step, please reference the Alternate Instructions starting on page 6 to continue your setup and install.**

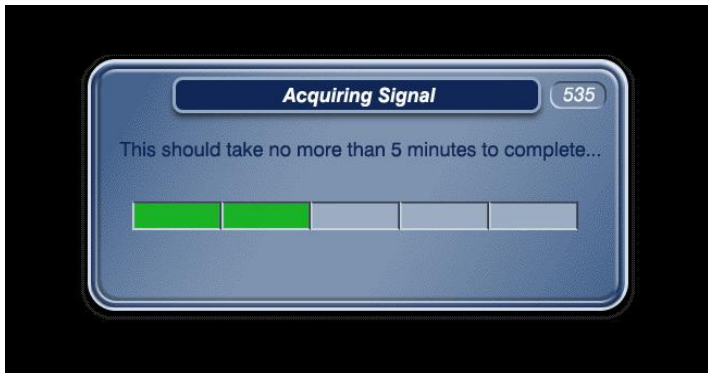
Step 2 of 5 Installation Wizard: Download Software



Portable Antenna Setup – Select your current location by state and then select ‘Scan’ (Second Scan)

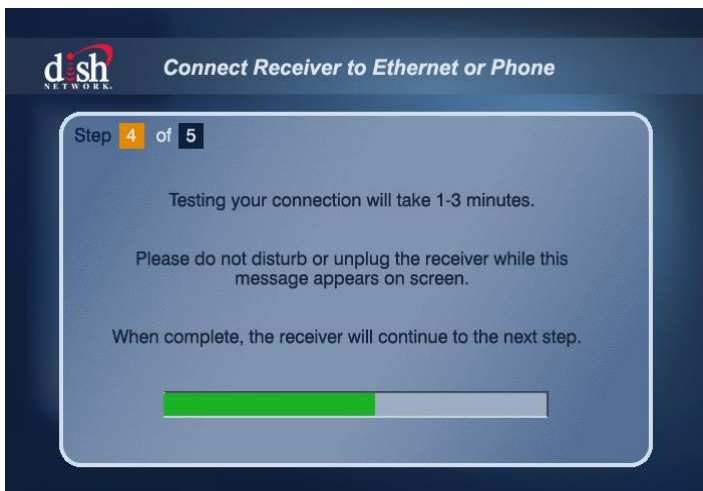


535 Popup



330 Popup: Downloading Program GuideStep 3 of 5 Installation Wizard: Set Video Resolution – Select your desired resolution and then select ‘Test’ and ‘Save’

**NOTE: If you do not see the Set Video Resolution screen at this step or any subsequent screens, please reference the Alternate Instructions, Alternate Step #8 on page 7 to continue your setup and install.**

Step 4 of 5 Installation Wizard: Connect Receiver to Ethernet or Phone – Select ‘Continue’

**NOTE: Connecting Ethernet or Phone is not required; it will automatically sequence through if you choose not to connect.**

Step 5 of 5 Installation Wizard: Activate Receiver

## First-Time Activation of DISH ViP®211k Receiver

To activate, call the applicable number listed below.

- New DISH Customers: 1.800.970.9623
- Existing DISH Customers: 1.888.854.9535

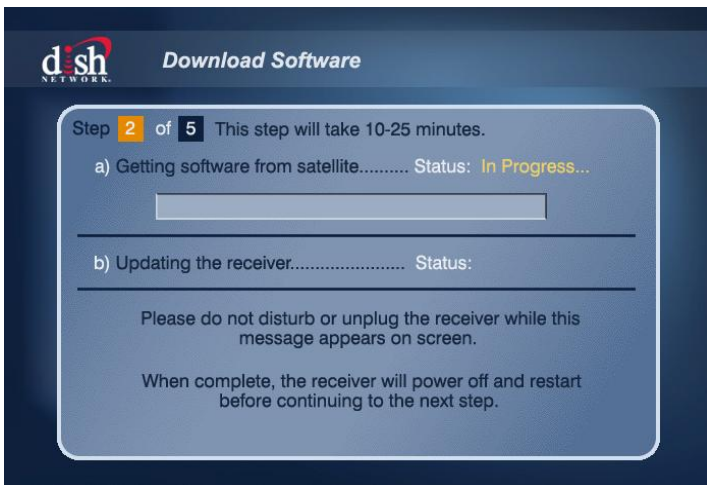
# First-Time Setup of Tailgater Satellite Antenna & DISH Receiver

ALTERNATE INSTRUCTIONS

ESTIMATED SETUP TIME

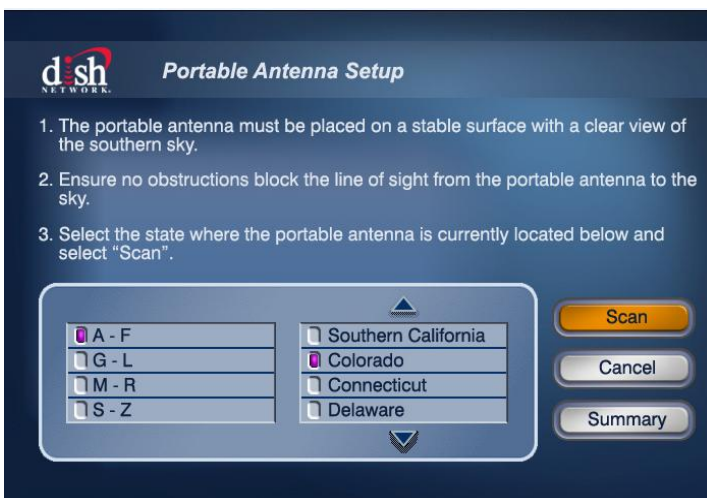
## ALTERNATE STEP #4

Step 2 of 5 Installation Wizard: Download Software – Select \*\*\*# on your DISH remote.



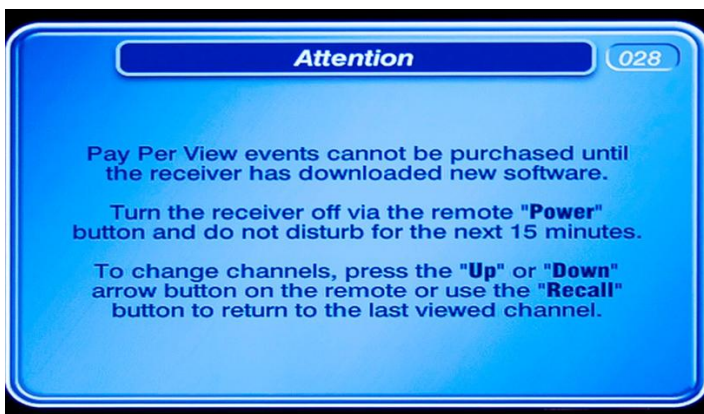
## ALTERNATE STEP #5

Portable Antenna Setup – Select your current location by state and then select 'Scan'



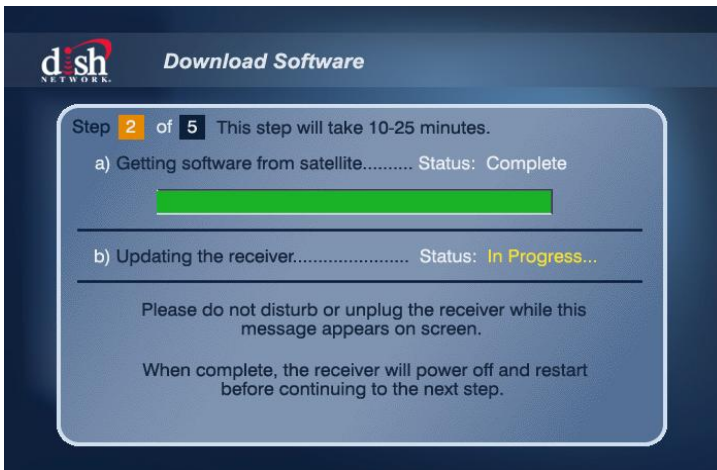
## ALTERNATE STEP #6

Follow the on-screen instructions to “Turn the receiver off via the remote “Power” button ...”



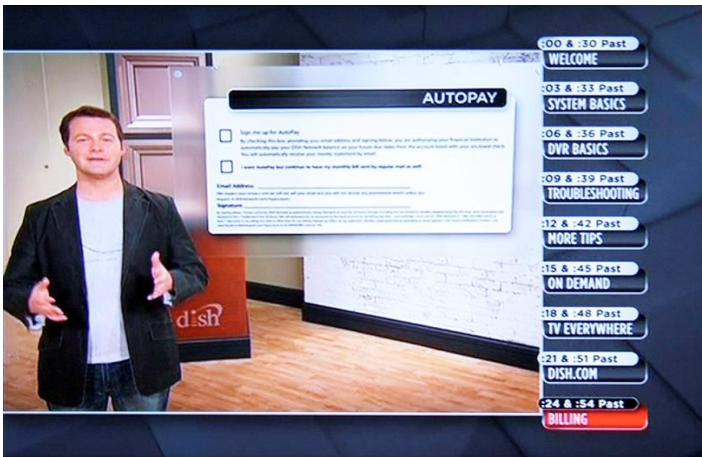
**ALTERNATE STEP #7****25 MINUTES**

Step 2 of 5 Installation Wizard: Download Software – Screen will automatically populate and sequence after powering off receiver.

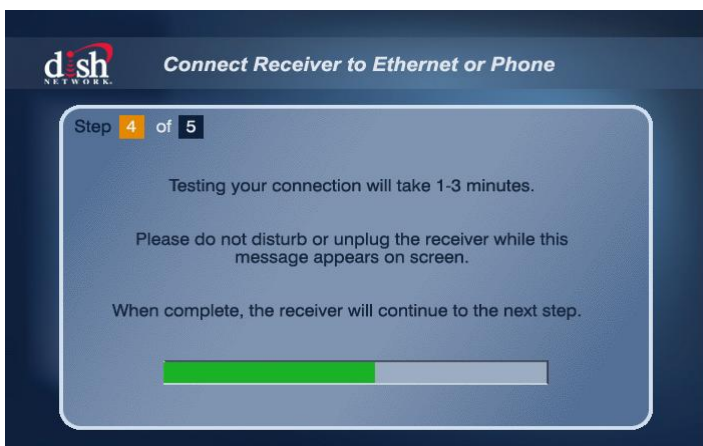
**ALTERNATE STEP #8**

Your receiver will automatically restart at the conclusion of Alternate Step #7.

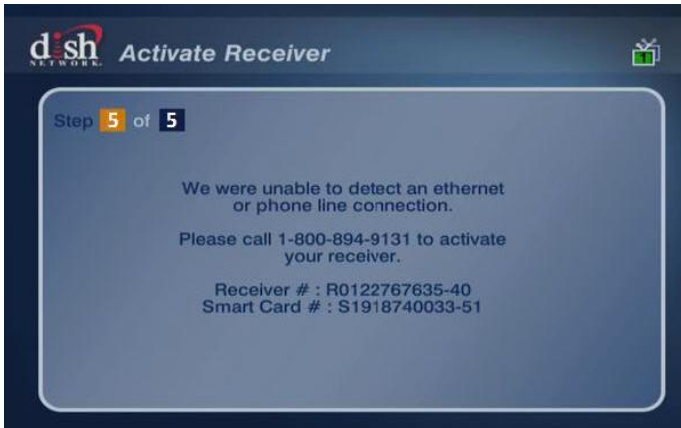
From this screen, select “Power” on your DISH remote, wait for 5 counts, and then select ‘Power’ on your DISH remote again.

**ALTERNATE STEP #9****3 MINUTES**

Step 4 of 5 Installation Wizard: Connect Receiver to Ethernet or Phone



**NOTE:** Connecting Ethernet or Phone is not required; it will automatically sequence through if you choose not to connect.

Step 5 of 5 Installation Wizard: Activate Receiver

## First-Time Activation of DISH ViP®211k Receiver

To activate, call the applicable number listed below.

- New DISH Customers: 1.800.970.9623
- Existing DISH Customers: 1.888.854.9535



# Subsequent Setup of Tailgater Satellite Antenna & DISH Receiver

## Setup | Installation

Software Version L551RGND-N

### INSTRUCTIONS

ESTIMATED SETUP TIME

<b>STEP #1</b>	
----------------	--

Position the Tailgater satellite antenna and connect the cabling between the Tailgater and receiver.

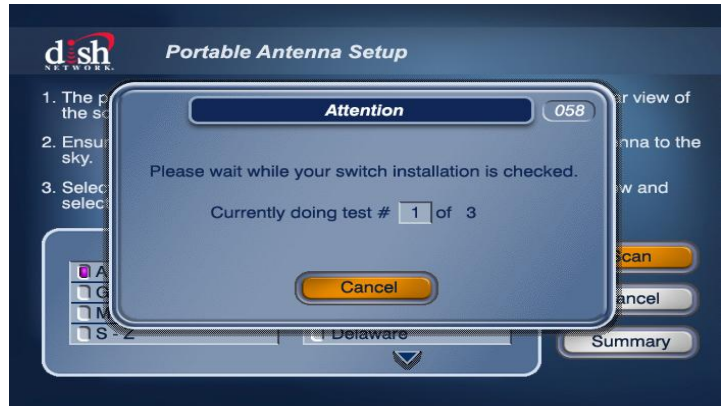
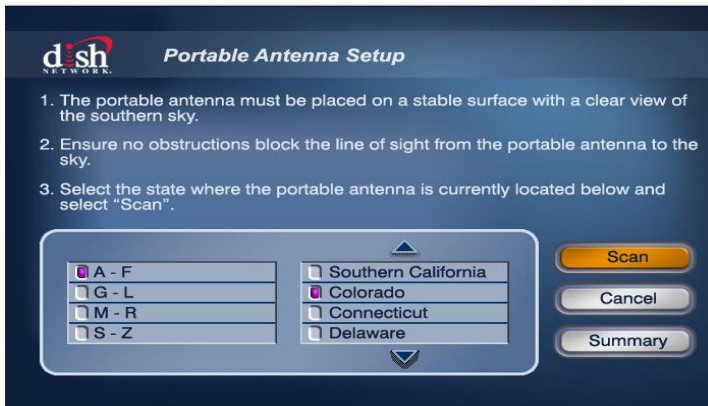
**IMPORTANT: The Tailgater and receiver are to be connected BEFORE the receiver is plugged in to the power outlet & turned on. If there is power to the receiver before it is connected to the Tailgater, it will begin the wrong satellite sequence and you will not be setting up your equipment accurately.**

<b>STEP #2</b>	
----------------	--

Power up TV / ViP®211k Receiver / Tailgater satellite antenna.

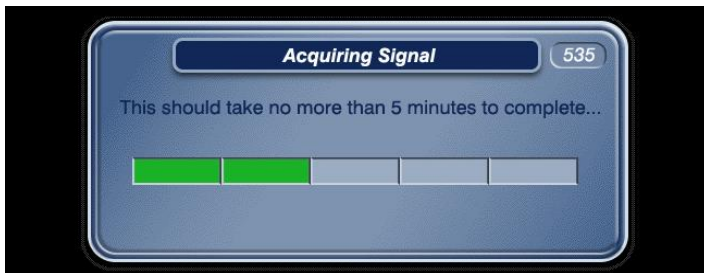
<b>STEP #3</b>	
----------------	--

Portable Antenna Setup – Select your current location by state and then select ‘Scan’



<b>STEP #4</b>	<b>5 MINUTES</b>
----------------	------------------

535 Popup



<b>STEP #8</b>	<b>10 MINUTE</b>
----------------	------------------

330 Popup: Downloading Program Guide

