
Setup Instructions for Winegard CarryOut GM1518 Satellite Antenna^{††} & DISH Receiver

Setup | Installation | Receiver Activation
Software Version L551RGND-N

TABLE OF CONTENTS

First-Time Setup	Page 2
Subsequent Setup	Page 4

First-Time Setup of Winegard CarryOut GM1518 Satellite Antenna^{††} & DISH Receiver

Setup | Installation | Receiver Activation

Software Version L551RGND-N

INSTRUCTIONS

ESTIMATED SETUP TIME

STEP #1	
----------------	--

Position the Winegard CarryOut satellite antenna and connect the cabling between the satellite antenna and receiver.

IMPORTANT: Ensure that your satellite antenna is connected to a power source, if applicable.

STEP #2	
----------------	--

Power up TV / ViP®211k Receiver / Winegard CarryOut satellite antenna.

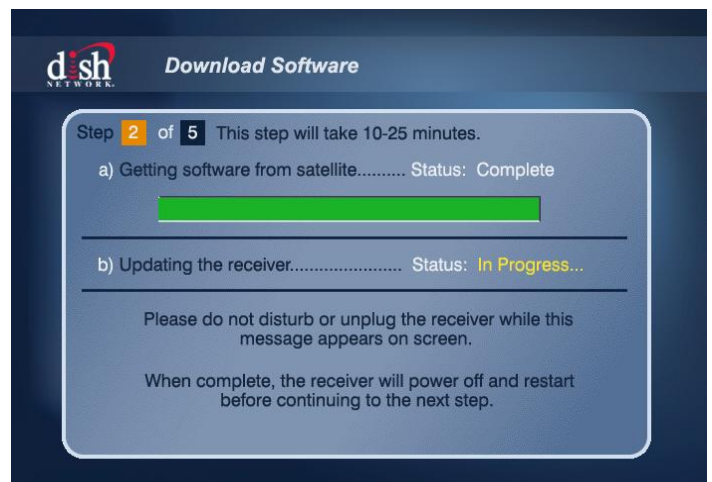
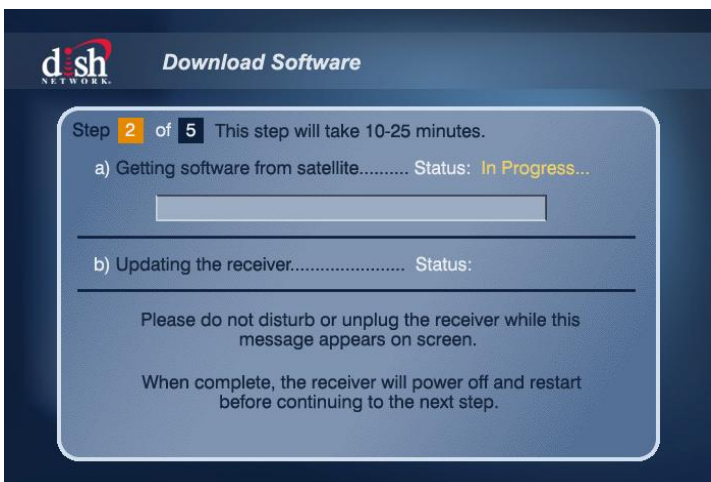
STEP #3	
----------------	--

Installation Wizard: Program TV Remote to Receiver – Follow the on-screen instructions by pressing ‘RECORD’ on your DISH remote and then selecting ‘Continue’



STEP #4	25 MINUTES
----------------	-------------------

Installation Wizard: Download Software



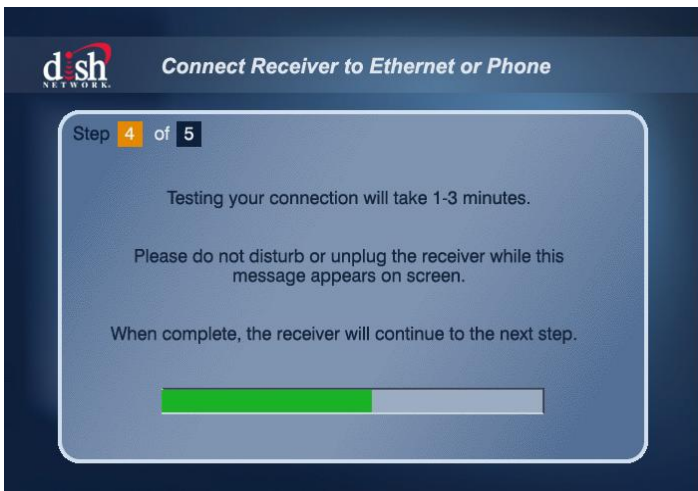
†† Also applicable for most automatic roof-mounted satellite antennas. Differences may apply.

STEP #5

Installation Wizard: Set Video Resolution – Select your desired resolution and then select ‘Test’ and ‘Save’

**STEP #6****3 MINUTES**

Installation Wizard: Connect Receiver to Ethernet or Phone – Select ‘Continue’



NOTE: Connecting Ethernet or Phone is not required; it will automatically sequence through if you choose not to connect.

STEP #7**10 MINUTES**

Installation Wizard: Activate Receiver



First-Time Activation of DISH ViP®211k Receiver

To activate, call the applicable number listed below.

- New DISH Customers: 1.800.970.9623
- Existing DISH Customers: 1.888.854.9535

Subsequent Setup of Winegard CarryOut GM1518 Satellite Antenna^{††} & DISH Receiver

Setup | Installation | Receiver Activation

Software Version L551RGND-N

INSTRUCTIONS

ESTIMATED SETUP TIME

STEP #1

Position the Winegard CarryOut satellite antenna and connect the cabling between the satellite antenna and receiver.

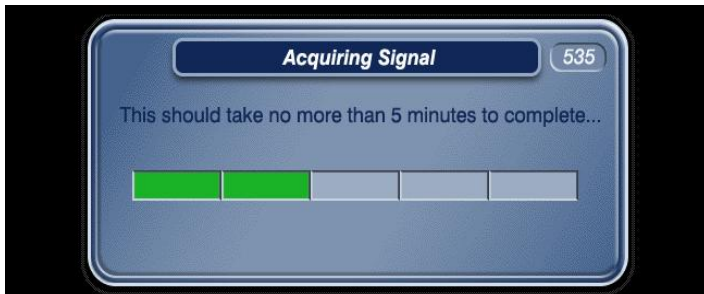
IMPORTANT: Ensure that your satellite antenna is connected to a power source, if applicable.

STEP #2

Power up TV / ViP®211k Receiver / Winegard CarryOut satellite antenna.

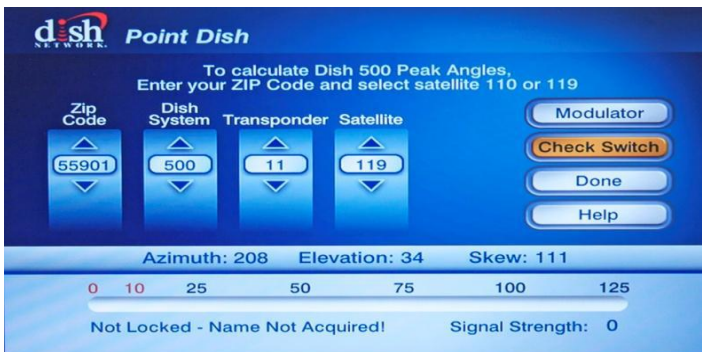
STEP #3

Select 'Menu' from your remote. From the Main Menu page, select '611' on your remote control number pad.



STEP #4

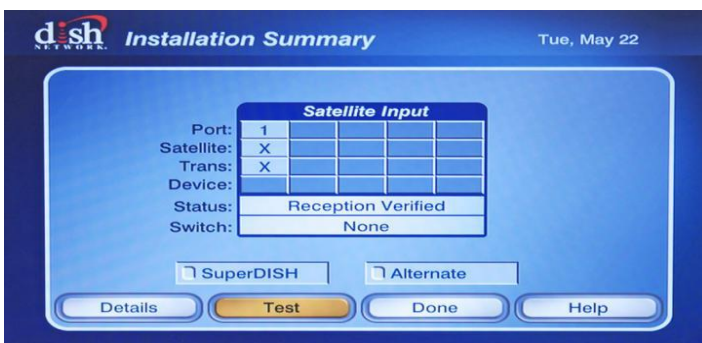
Select 'Check Switch' with your DISH remote.



STEP #5

20 MINUTES

Select 'Test' with your DISH remote.

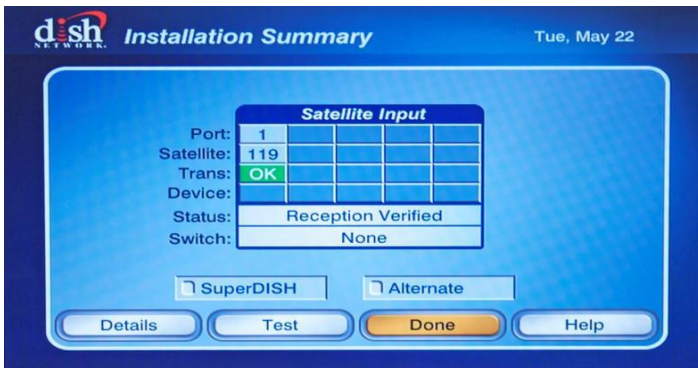


^{††} Also applicable for most automatic roof-mounted satellite antennas. Differences may apply.

STEP #6**3 MINUTES**

Select 'Done' using your DISH remote.

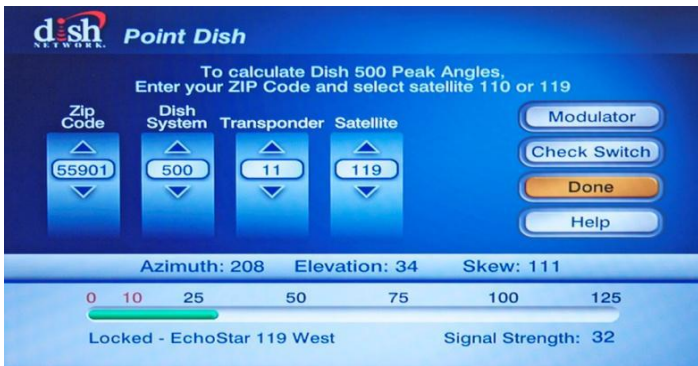
If using TR6100, you should see all three satellites at this step (110, 119, 129).



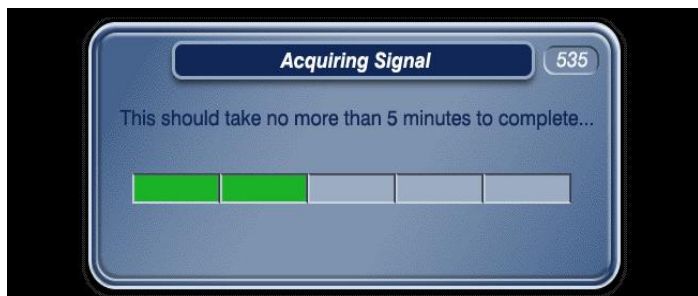
NOTE: If you see an X in the place of the satellite information (110, 119, 129) at this step, reposition your satellite antenna and then select 'Test.'

STEP #7

Select 'Done' on your DISH remote, and then 'Cancel.' Do this three (3) times.

**STEP #8****5 MINUTES**

535 Popup: Acquiring Signal

**STEP #9****10 MINUTES**

330 Popup: Downloading Program Guide



Installation Wizard: Activate Receiver

First-Time Activation of DISH ViP®211k Receiver

To activate, call the applicable number listed below.

- New DISH Customers: 1.800.970.9623
- Existing DISH Customers: 1.888.854.9535