
Setup Instructions for Winegard CarryOut GM1518 Satellite Antenna^{††} & DISH Receiver

Setup | Installation | Receiver Activation
Software Version L551RGND-N

TABLE OF CONTENTS

| | |
|------------------|--------|
| First-Time Setup | Page 2 |
| Subsequent Setup | Page 4 |

First-Time Setup of Winegard CarryOut GM1518 Satellite Antenna^{††} & DISH Receiver

Setup | Installation | Receiver Activation

Software Version L551RGND-N

INSTRUCTIONS

ESTIMATED SETUP TIME

| | |
|----------------|--|
| STEP #1 | |
|----------------|--|

Position the Winegard CarryOut satellite antenna and connect the cabling between the satellite antenna and receiver.

IMPORTANT: Ensure that your satellite antenna is connected to a power source, if applicable.

| | |
|----------------|--|
| STEP #2 | |
|----------------|--|

Power up TV / ViP®211k Receiver / Winegard CarryOut satellite antenna.

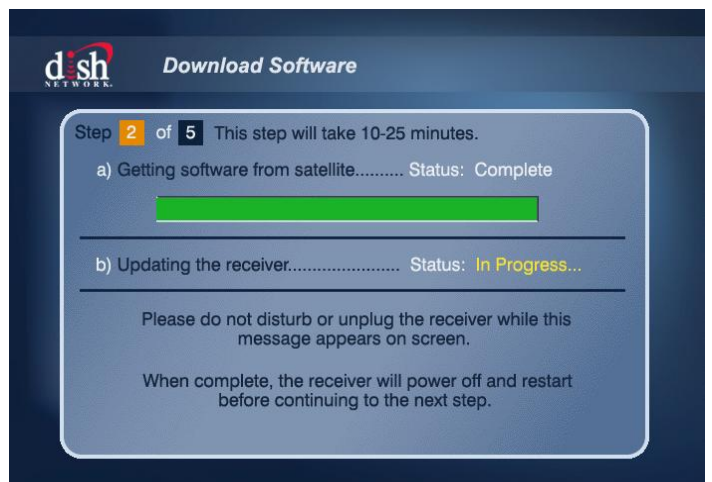
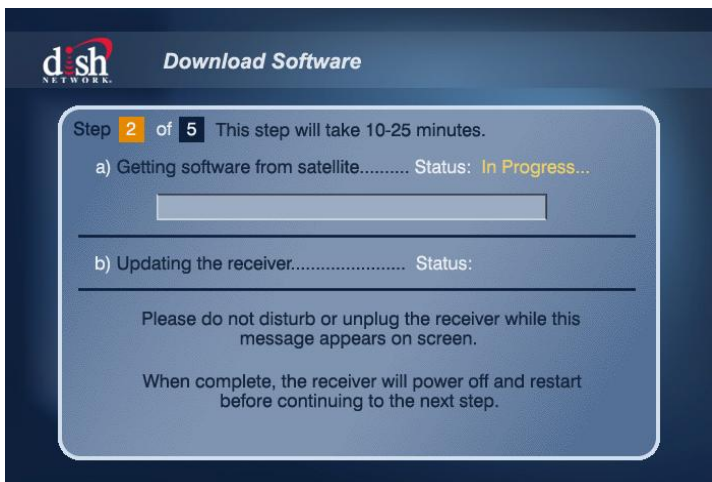
| | |
|----------------|--|
| STEP #3 | |
|----------------|--|

Step 1 of 5 Installation Wizard: Program TV Remote to Receiver – Follow the on-screen instructions by pressing 'RECORD' on your DISH remote and then selecting 'Continue'



| | |
|----------------|-------------------|
| STEP #4 | 25 MINUTES |
|----------------|-------------------|

Step 2 of 5 Installation Wizard: Download Software

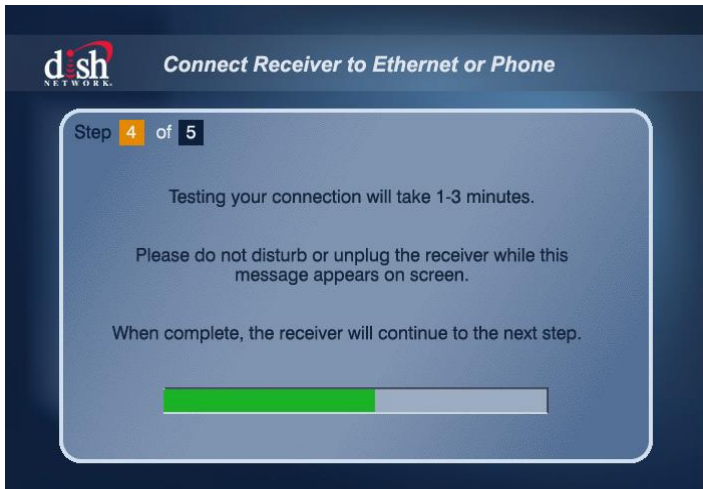


STEP #5

Step 3 of 5 Installation Wizard: Set Video Resolution – Select your desired resolution and then select ‘Test’ and ‘Save’

**STEP #6****3 MINUTES**

Step 4 of 5 Installation Wizard: Connect Receiver to Ethernet or Phone – Select ‘Continue’



NOTE: Connecting Ethernet or Phone is not required; it will automatically sequence through if you choose not to connect.

STEP #7**10 MINUTES**

Step 5 of 5 Installation Wizard: Activate Receiver



First-Time Activation of DISH ViP®211k Receiver

To activate, call the applicable number listed below.

- New DISH Customers: 1.800.970.9623
- Existing DISH Customers: 1.888.854.9535

Subsequent Setup of Winegard CarryOut GM1518 Satellite Antenna^{††} & DISH Receiver

Setup | Installation

Software Version L551RGND-N

INSTRUCTIONS

ESTIMATED SETUP TIME

| | |
|----------------|--|
| STEP #1 | |
|----------------|--|

Position the Winegard CarryOut satellite antenna and connect the cabling between the satellite antenna and receiver.

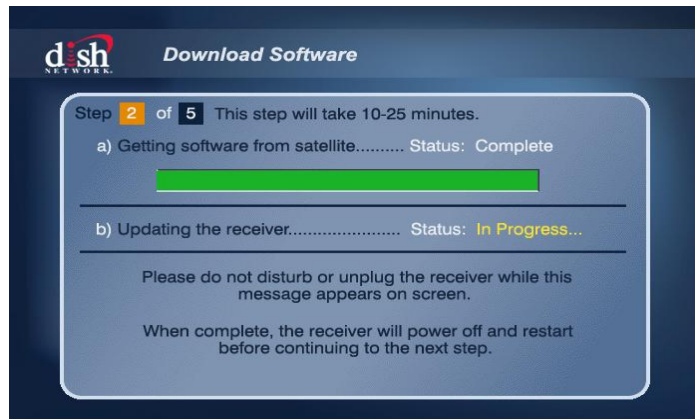
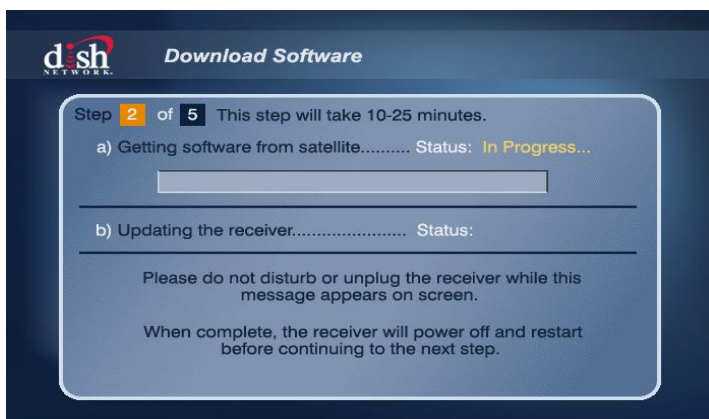
IMPORTANT: Ensure that your satellite antenna is connected to a power source, if applicable.

| | |
|----------------|--|
| STEP #2 | |
|----------------|--|

Power up TV / ViP®211k Receiver / Winegard CarryOut satellite antenna.

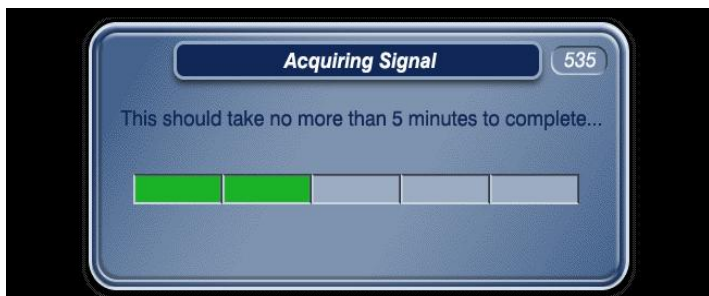
| | |
|----------------|-------------------|
| STEP #3 | 25 MINUTES |
|----------------|-------------------|

Step 2 of 5 Installation Wizard: Download Software



| | |
|----------------|------------------|
| STEP #4 | 5 MINUTES |
|----------------|------------------|

535 Popup



| | |
|----------------|-------------------|
| STEP #5 | 10 MINUTES |
|----------------|-------------------|

330 Popup: Downloading Program Guide



†† Also applicable for most automatic roof-mounted satellite antennas. Differences may apply.